

TESTING REPORT

Procedure used: 2A 2B VERSION DATE: 2011

> ISTA CERTIFIED LABORATORY

Laboratory: HQTS QA International Services Co., Ltd.

ISTA Member ID: ST-1908

Address: Building B, Taineng Park, Xiyuan 6th Road

Email: pkg@hqts-qai.com

City: Hangzhou

State/Prov: Zhejiang

Phone: +86 571 88907007

Zip/Postal Code: 310030

Country: China

Lab reference number for test (if applicable): HQ153102638

> PRODUCT MANUFACTURER / SHIPPER

Test Requested by :XX

Company :XX

ISTA Member ID (if applicable) :

Address :XX

ISTA Manufacturer's License Number (if applicable) :

City, State/Prov :XX, XX

> PRODUCT AND PACKAGE DESCRIPTIONS

Date Tested: May 6, 2016

SKU/Item No.: 0.601.281.767

Date Received: April. 28, 2016

Product Description: Jig Saw GST 65 BE

Number of Samples tested 1

S Value: 30 (Total number of layers stacking)

Gross Weight 5.07 lbs/ 2.30 kg

PACKAGE Condition before testing: No damage

External Dimensions (L x W x H) 12.2 " x 8.7 " x 3.5 "

The PACKAGING used during testing was:

310 mm x 220 mm x 90 mm

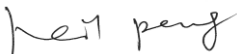
 ORIGINAL as arrived in the lab for testing NEW re-packaged with new materials before testingDid the lab OPEN the packaged-product before testing to determine product condition? YES NO**PACKAGE Description: The Jig Saw GST 65 BE and other components were fixed by corrugated board; then packed into a master carton box.**

> TEST RESULTS

PRODUCT Condition after testing (if inspected): Found deformation mark on the product; found rust mark on the product; no other obvious change and the product operate well.**PACKAGE Condition after testing: Found breakage mark on corrugated board; no other obvious change.** Pass Fail Actual Finding

Comments or recommendations:

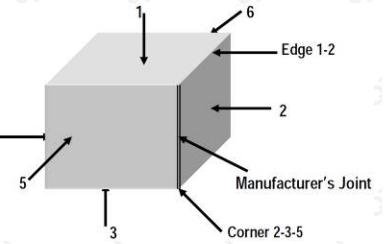
> AUTHORIZED BY

Neil Peng
General Manager

> ORIENTATION

What position was the packaged-product in when the faces, edges and corners were identified:

- MOST STABLE SHIPPING



> ATMOSPHERIC CONDITIONING

Required Conditioning (Controlled)

Time of Conditioning (hours): **72** Temperature (°C): **38** °C Humidity (%RH): **85**

> COMPRESSION TEST

Method Used: **Compression Test System** **Weight Load and Spreader**

Formula, with values, used to calculate Test Load: $TL = Wt \times (S-1) \times F$

Compensating Factor used: **3**

If this Compensating Factor is NOT ISTA recommended, please explain: /

Calculated Test Load (lbs/kg): **441 / 200** Actual Test Load (lbs/kg): **441 / 200**

Total Test Time (minutes): **60** Overall Deflection (inch/mm): **0.24 / 6.15**

> VIBRATION TEST

Method Used: **Rotary** fixed displacement **Vertical Linear** fixed displacement **Random**

Describe restraining devices used, if any:

Fixed Displacement Vibration

Face resting on platform: **3**

First Part: Minutes: **30** @ Frequency (CPM/Hz): **240 / 4.0** = Number of Impacts: **7200**

Rotation of 90° Rotation of 180° No rotation

Second Part (if applicable): Minutes: **30** @ Frequency (CPM/Hz): **240 / 4.0** = Number of Impacts: **7200**

> SHOCK TEST

Method Used: Free Fall Drop Shock Machine Incline-Impact Horizontal Sled

Shock Sequence Number	Height of Shock (inches / mm)	Orientation of packaged-product	
1	38 / 970	CORNER	2-3-5
2	38 / 970	EDGE	2-3
3	38 / 970	EDGE	2-5
4	38 / 970	EDGE	3-5
5	38 / 970	FACE	5
6	38 / 970	FACE	6
7	38 / 970	FACE	2
8	38 / 970	FACE	4
9	38 / 970	FACE	1
10	38 / 970	FACE	3

> VIBRATION TEST

Method Used: Rotary fixed displacement Vertical Linear fixed displacement Random

Describe restraining devices used, if any:

Fixed Displacement Vibration

Face resting on platform: **3**

First Part: Minutes: **30** @ Frequency (CPM/Hz): **240 CPM/ 4.0 Hz** = Number of Impacts: **7200**

Rotation of 90° Rotation of 180° No rotation

Second Part (if applicable): Minutes: **30** @ Frequency (CPM/Hz): **240 CPM/ 4.0 Hz** = Number of Impacts: **7200**

PHOTO ATTACHMENT



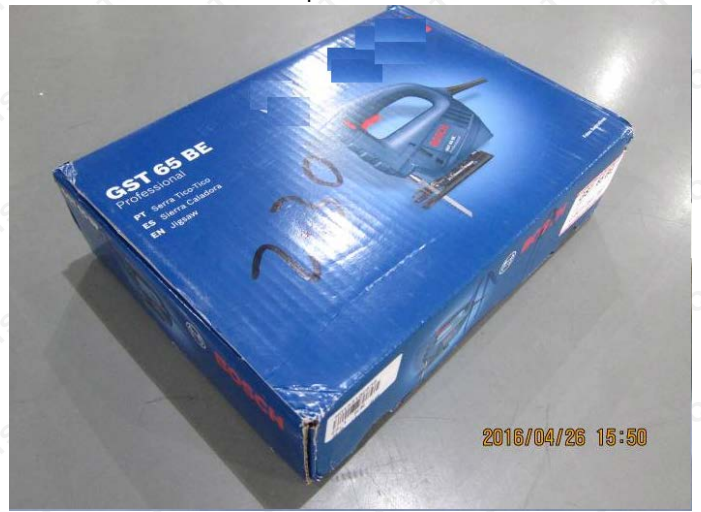
Sample before test



Compression test



Drop test



Sample after test



Box open



Internal packaging 1)

TO BE CONTINUED

PHOTO ATTACHMENT



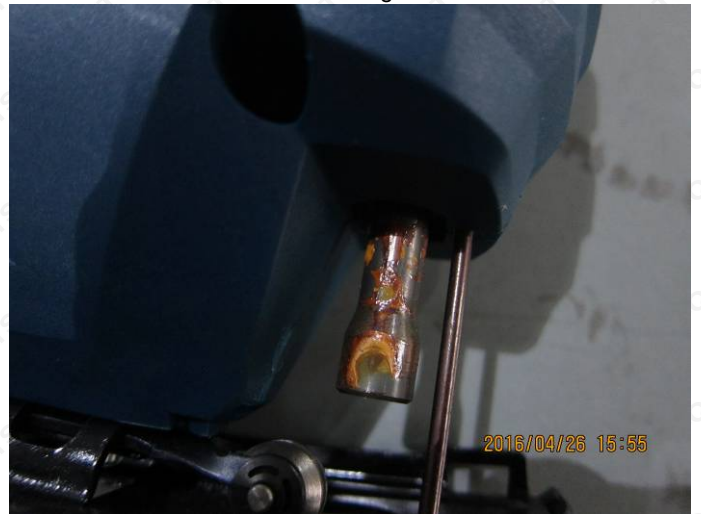
Internal packaging 2)



Found breakage mark



Found deformation mark



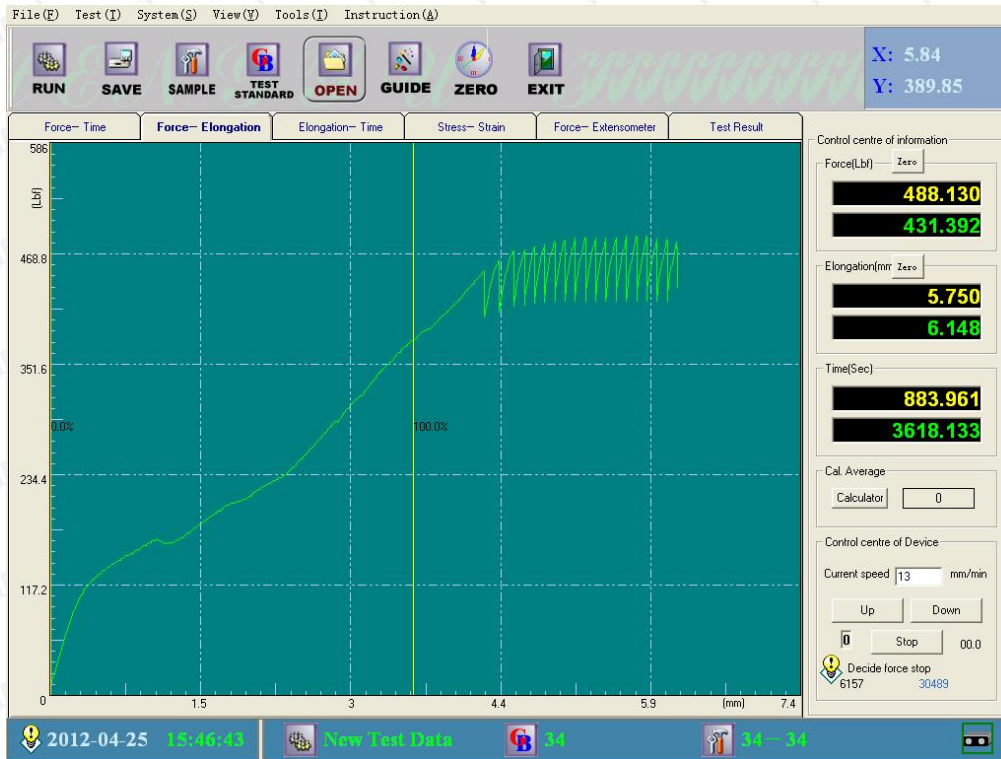
Found rust mark



Unit product

TO BE CONTINUED

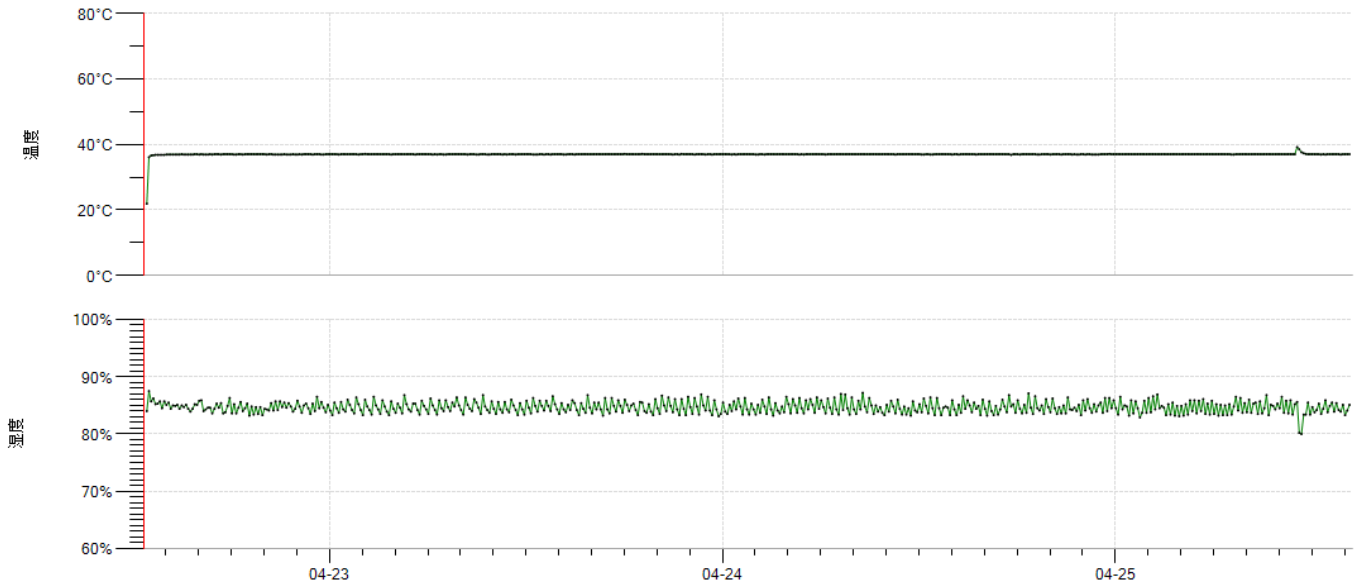
PHOTO ATTACHMENT



Compression Deflection Chart

记录仪采集数据趋势图 (TH-HIGH, THEXT15100827390A)

开始时间:2016-04-22 12:49:12 结束时间:2016-04-25 14:21:51 记录间隔:00:01:00 记录总点数:4413



Environmental Time Vs Condition Chart

END OF REPORT